

L O G A N      P A R K      N E I G H B O R H O O D      A S S O C I A T I O N

Next meeting: July 19, 1989

7:00 p.m. Logan Park building

+

WHY DOES Logan Park Neighborhood Association (LPNA) exist?

To be a voice for the neighborhood!

## HOW does LPNA do this?

Residents' concerns which were discussed at recent meetings:

1. large trucks using Adams Street apparently as a short-cut
2. increased litter from the convenience stores on Broadway
3. grafitti on the 18th and Monroe underpass
4. a particular house having unusual and heavy volume of visitors and activity at odd hours of day/night
5. parking around Logan Park

Actions were suggested and the organization and/or individuals have responded with things to do.

In the June 21st issue of the Northeaster newspaper, a letter to the editor requests that the newspaper print crime reports. Many people would argue that the printing of the crime statistics would emphasize and perhaps glorify the deeds which have been done. There are certain criminals which enjoy the publicity of "their" crime.

However, as a neighborhood group we have access to such reports and we are able to recognize types of crime or trends which may be developing. As a group we can work together to be aware of things we can do to eradicate undesirable behavior.

WELCOME TO OUR MEETINGS! Be a participant in your neighborhood and know what is happening here. Maybe you can make an influence on whether our neighborhood is a good place to live.

In May an election was held to choose new members for the Board of Directors and new officers for this year.

Chair Leonard Sandell

Vice Chair Jim LeClair

Secretary Larry Roschen

Treasurer Jeanne Pielow

Additional Board Members: Faith Lindell, Becky Freeman, Don Baumann, Bill Jacobson, Jr., Robert George, Steve Jacobson. Alternates: Betty Blixt, Pat Smith, Bill Jacobson, Sr.

#### NORTHEAST NEIGHBORHOODS MEET TOGETHER

Often our small neighborhood groups wonder what other groups are doing. We also often feel as though we don't have any influence among the numerous and powerful special interest groups that bombard our city government.

A group of representatives from Northeast neighborhoods are presently meeting together and considering topics which impact more than one neighborhood. Some of these topics are:

light-rail transit  
Pillsbury school use  
Hollywood Theatre on Johnson Street

This group is trying to determine what kind of Northeast-wide effort will suit everyone's needs. LPNA's representative to this group is Leonard Sandell.

Through collective action, Northeast groups can present Northeast Minneapolis as a great place to live and can bring public awareness to the fact that we can and do have an important role to play in the development of this city.

### \$18.2 Million for the Year of the City

As the 1989 Legislative Session drew to a close, the Legislature voted for \$18.2 million to fund the Year of the City. This is a significant amount of money which will need to be carefully apportioned among many needy projects.

A big requirement for the use of this money is neighborhood participation. In order for this money to be released, the city must develop a process to involve residents of targeted areas.

LOGAN PARK NEIGHBORHOOD IS A TARGETED AREA which means within our boundaries there is a majority (50.5% or more) of low and moderate income residents with 25% plus substandard housing.

Objectives for the use of these funds:

- \*\* Increase community safety and reduce crime
- \*\* Enhance family stability
- \*\* Provide opportunities for residents to become self-supporting
- \*\* Build the capacity of neighborhood-based organizations to create cohesiveness and stability
- \*\* Must use \$350,000 on the Mpls. Way to Grow program, a school-readiness program
- \*\* Housing activities
  - planning of buildings & improvements
  - acquiring property needed for improvements
  - construction & reconstruction
  - alterations & repair of new & existing buildings
  - loan and grant program for housing rehabilitation and energy improvement

On June 12, representatives for the Year of the City Advisory Council were appointed. Out of 12 representatives for the entire city, we are fortunate to have two people from our area on this council: LPNA's chair, Leonard Sandell and Anne Guzy from the Holland Neighborhood Improvement Assn.

For suggestions or questions give Leonard Sandell a call at his home 789-1007 or leave a message on LPNA's machine 781-0700.

# # # # #

The Mayor and the City Council recently created the City/Neighborhood Communications Committee to recommend ways "to improve the quality and timing of communications from the city to citizens of Mpls and to community and neighborhood organizations through both print and electronic means." Reports from this committee will be made to the next meeting of LPNA.



COMMUNITY CRIME PREVENTION

This is a department of the city of Minneapolis that works with us to resolve livability problems and reduce opportunities for crime. One way this is done is by organizing block and apartment clubs, teaching neighbors to watch out for each other and make accurate reports to the police. These clubs hold special events on the second Tuesday of each August to renew their watchforce efforts.

National Night Out, August 8, 1989

Plans are being made for many block parties and collections for the Northeast food shelf. There will be runners (accompanied by a van) going from party to party picking up the contributions!

Watch for additional information about this event!

This event is important in that it is an anti-crime message and it is also a nation-wide activity.

\* \* \* \* \*

EXTRA! EXTRA! READ ALL ABOUT IT!

LPNA has just received the latest edition of the brochure listing MCDA home improvement loans and grants. If you would like a copy of this brochure leave a message on the LPNA machine (781-0700) and it will be mailed out to you.

Home improvement loans and grants for  
general repairs  
major renovation  
room additions  
energy conservation  
handicap accessibility

Rental properties - no income limit. For owner-occupied - maximum adjusted gross income: \$46,530

\* \* \* \* \*

Recently government and civic leaders gathered at the Minneapolis Convention Center to honor those "who have gone the extra mile" in community service.

The winners were selected from 83 nominees who performed community service work within the past year. Winner from Northeast was:

Anne Guzy, Senior Aid Program, Eastside Neighborhood Services

## TWENTY-YEAR REVITALIZATION PLAN

Why burden ourselves with a long-term commitment to a revitalization program? After all, except for a few areas, Minneapolis is an attractive, well-run center city, especially in comparison to similar large cities across the United States. What makes us think we need such a program?

The 20-year future for much of Minneapolis, if we do not undertake a revitalization program, is sufficiently alarming that a well-planned and well-run program must be an urgent, long-term priority for Minneapolis and Hennepin County.

A number of committees have been meeting for many months to formulate suggestions of ways we can go. Their plan proposes a new strategy rather than new programs. This strategy recognizes neighborhood revitalization as much more than a hardware-housing program. Neighborhood revitalization must successfully address issues such as health and safety, income and employment, and education, as well as physical condition.

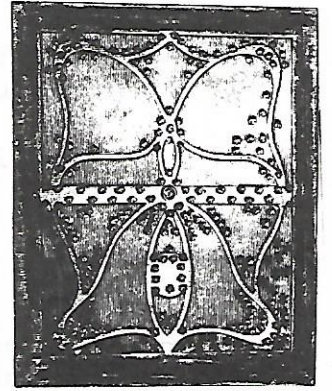
A report has been published which is being circulated for 90 days for review by neighborhood groups and other interested parties. Some suggestions from the report:

1. Develop a sense of community in all neighborhoods
2. Increase economic integration of neighborhood through a system of incentives
3. Increase homeownership
4. Maintain housing that is now sound; improve housing that is substandard
5. Increase permanently affordable housing for low-income households
6. Where appropriate, increase employment opportunities within neighborhoods
7. Improve accessibility of employment to neighborhood residents
8. Provide transportation to serve employment and child care needs of neighborhood residents
9. Maintain and improve park facilities, lands, and programs
10. Provide quality education to serve the needs of residents
11. Restructure public services and information to support neighborhoods
12. Reduce neighborhood crime
13. Make the city as physically attractive as possible
14. Increase sound environment practices

All of these suggestions impact Logan Park area. We can and should react to those suggestions which are of primary importance to us personally. As an organization, Logan Park Neighborhood Association is already working on #1. Join us so that you can let us know what you think about improving our neighborhood.



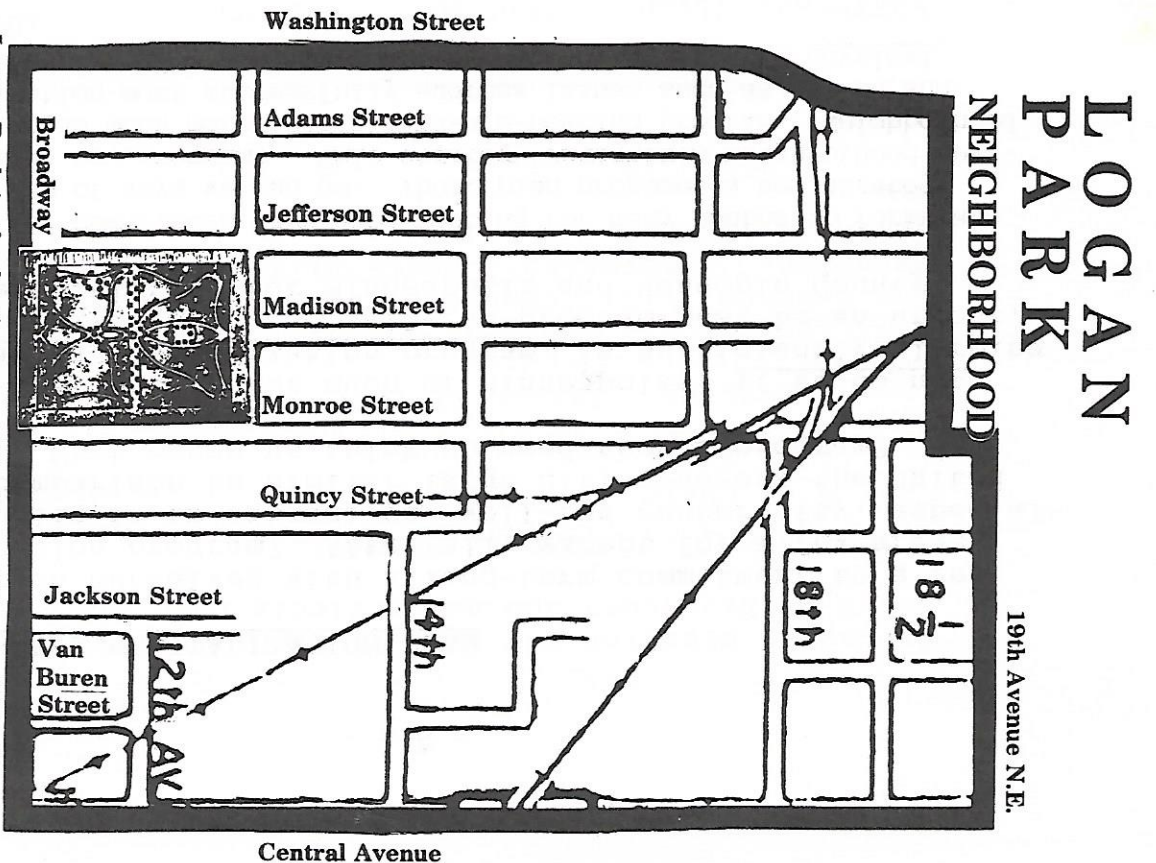
To Enhance  
and Preserve  
Our Community



# LOGAN PARK NEIGHBORHOOD ASSOCIATION

Logan Park Neighborhood Assoc.  
1330 Van Buren St. N.E.  
Minneapolis, MN 55413  
781-0700

Bulk Rate  
U.S. Postage Paid  
Minneapolis, MN  
Permit No. 2266



Logan Park is the birthplace of Northrup King and Medtronic (started by a resident entrepreneur in his garage on 19th Avenue), the home of the Firefighters Memorial Museum, the Minneapolis Public Schools Educational Service Center, and the Northeast Senior Citizen Resource Center.

The Logan Park Neighborhood Association identity graphic is the original plan of the parkgrounds. It was submitted to the Minneapolis Board of Park Commissioners 100 years ago by Professor H.W.S. Cleveland, landscape architect. The plan, and then the park, featured a large central fountain and carefully designed walkways, shrubbery, and trees.